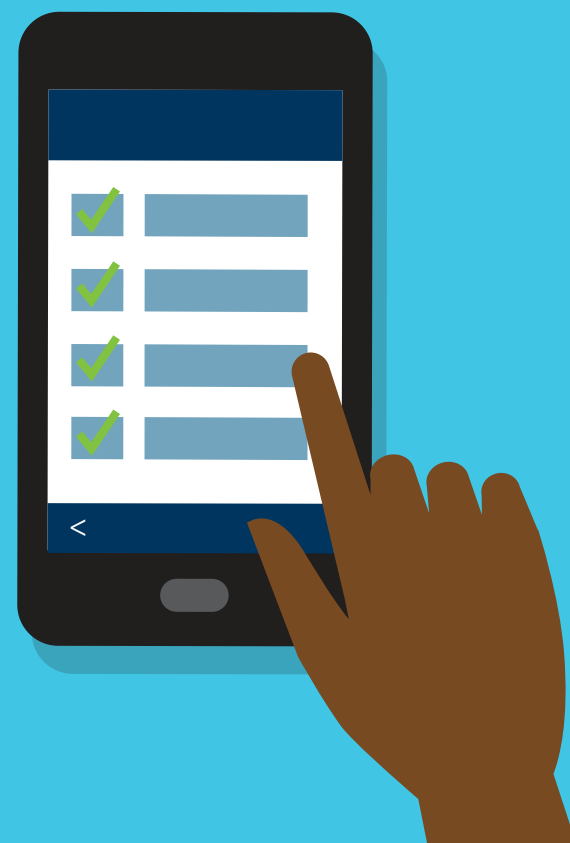


PAPER VS. ELECTRONIC DATA CAPTURE

Explore the benefits of electronic Patient Reported Outcomes (ePRO) data in clinical trials



VS.

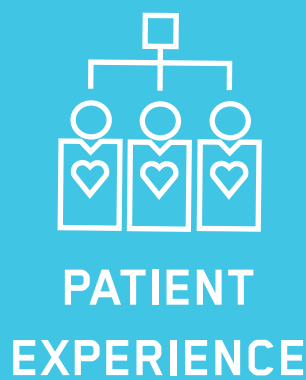


PAPER CAPTURE

- ⚠ Incomplete, conflicting or erroneous data entries possible
- ⚠ Risk of manual transcription errors
- ⚠ Data may not meet global regulatory standards
- ⚠ Double data entry, QC check & associated data management
- ⚠ Inefficient procedures and workflows
- ⚠ Lengthy data entry, verification and query resolution
- ⚠ Logistical burden of printing, shipping and returning paper diaries
- ⚠ Data entry and verification delays access
- ⚠ Lack of real-time visibility into patient safety and study performance
- ⚠ Ethics & regulatory issues due to perceived burden on patients
- ⚠ Low compliance levels without electronic reminders and motivational messaging
- ⚠ Manual, error-prone collection of data from devices
- ⚠ Time-consuming transcription of data

ELECTRONIC CAPTURE

- ✓ Controlled data entry with thresholds, pre-set parameters and data entry time windows
- ✓ Automatic, real-time transfer of data into central database
- ✓ Time-stamped, attributable data with full audit trail
- ✓ Prompt database lock and transfer of clean data to sponsor
- ✓ BYOD* approach eliminates cost of provisioning devices
- ✓ Automatic, real-time transfer of data into central database, shortening study timelines
- ✓ Reduced logistical burden, particularly for web and BYOD solutions
- ✓ Real-time access to data throughout the entire study
- ✓ Ability to monitor progress vs. targets throughout study and detect patient safety concerns early
- ✓ Integrated with everyday life via patient's own device (BYOD), with app easy to download
- ✓ Flexibility to offer additional support and motivation where study design allows
- ✓ Patients prefer digital collection & option to use own device (BYOD)
- ✓ Integrates with medical devices, wearables, EDC & IVR
- ✓ Wireless transmission to study database



*Bring Your Own Device

INCREASE DATA QUALITY THROUGH THE COST-EFFECTIVE IMPLEMENTATION OF ELECTRONIC DATA CAPTURE. FOR MORE INFORMATION, GO TO ERT.COM OR EMAIL INFO@ERT.COM.

